
Under the auspices of the
WELSH MULE SHEEP BREEDERS' ASSOCIATION

Welshpool, Powys

Thirty Seventh Annual Sale of

6863 WELSH MULES



653 EWES AND 6210 EWE LAMBS

On Thursday, 10th October 2019

Sale at 10.30a.m. prompt

WELSHPOOL LIVESTOCK SALES

Official Auctioneers to the Welsh Mule Sheep Breeders
Welshpool (Tel: 01938 553438)

NOTICE TO VENDORS

ALL SHEEP TO BE PENNED BY 9.00 a.m. TO ALLOW AMPLE OPPORTUNITY FOR INSPECTION BY BUYERS PRIOR TO THE SALE, WHICH WILL COMMENCE AT 10.30 a.m. PROMPT. UNDER NO CIRCUMSTANCES WILL ANY SHEEP BE ALLOWED TO BE PENNED AFTER THE COMMENCEMENT OF THE SALE.

Vendors are requested to supervise the herding of their own sheep into the Selling Ring and back to their respective pens thereafter. Vendors must assist purchasers both during and after the sale.

CONDITIONS OF SALE

1. All sheep have been entered by Members of the Association on the prescribed form and are the progeny of Welsh Mountain, Welsh Hill, Speckled Beulah, Speckled Face Brecknock, Hill Cheviot and Pedigree Blue-faced Leicester Ram registered with the Blue-faced Leicester Sheep Breeders Association.
2. The Association reserves the right through its inspectors to prevent any sheep being put up for sale without stating its reasons for doing so.
3. The highest bidder shall be the purchaser, and if any dispute shall arise between two or more bidders, the lots in dispute to be put up again at the sum last bid, or the Auctioneers may declare the purchaser.
4. The biddings to be ruled by the Auctioneers shall not be less than £1.
5. No person shall retract a bidding without permission of the Auctioneers, who reserve to themselves the right of refusing a bidding, and also the right of withdrawing any lot or lots from the sale.
6. The purchaser to declare their names and addresses, and if required, to pay to the Auctioneers or their clerks the amount of the purchase money immediately on the fall of the hammer, and in default of which the Lot or Lots shall be offered again and re-sold, and under no circumstances must any lot be removed without first obtaining a pass from the clerk. Persons who are not known to the Auctioneers and intend making purchases must bring a Bankers' reference or other approved security for their satisfaction.
7. The Association through the Auctioneers reserve the right of deviating from the Catalogue either by amalgamation, dividing or withdrawing the lots prior to or during the sale as circumstances may require: and also deviating from the order or sale.
8. The Lots to be under the immediate care of Purchasers who must remove same at their own risk, on the day of sale, and no purchase shall be allowed to be removed from the Premises until the whole of the Purchase Money is paid.
9. **The Vendor guarantees sheep to be sound in mouth, udder and feet on day of sale. In the case of any complaints, buyers must notify the Auctioneers within 24 hours of the closure of sale in regard to cases of Footrot, Orf and Sore Mouth, and within 7 days of the sale in regard to teeth and udder. The decision of the Association shall be final. A Vendor having allowed a wether lamb to pass through the sale and sold as ewe lamb will not be paid for that lamb and the buyer will be refunded the amount paid by him for the "ewe lamb" vendor losing all claims provided the Auctioneers are informed within 4 weeks.**
10. Upon failure to comply with the above Conditions, the uncleared lots will be resold, either by Public or Private Sale, and the deficiency (if any) and all expenses attendant thereon shall be made good by the defaulters at this Auction who shall have no claim for any surplus that may arise.
11. All entries are accepted subject to the foregoing conditions.
12. No set-off or deduction will, under any circumstances, be allowed.

13. The Association is not a party to any contract to purchase animals at the sale. The Association accepts no liability whatsoever for any loss arising from the sale of the sheep in the Association's official sales.
14. Whilst the Association makes available to intending and actual purchasers the services of its Field Officer, the Association does not accept liability for any advice, omission, opinion or inspection undertaken by the officially appointed Panel of Inspectors or the Association's Field Officer either prior, during or after the sale. It is for the Vendor and the Purchaser to satisfy themselves as to the quality of the livestock in the auction.
15. Whilst the Association endeavours to ensure the quality of sheep presented in the official sales and arranges for all sheep on offer to be inspected by an approved Panel of Inspectors. The Association gives no warranty in relation to the sheep presented for sale and the Association does not accept any liability whatsoever for any issue that may arise in relation to the quality or health of the animals presented for sale.
16. Whilst the Association will use its best endeavours to ensure the quality and health of the livestock on offer for sale, the Association and its Officers accept no liability, howsoever arising, to either Purchasers or Vendors for any injuries or illness suffered by livestock entered into the sale. It is the Vendors obligation to ensure that all livestock entered is suitable for the sale and in compliance with the conditions of entry.
17. If the parties are unable to agree upon the determination of any sum or monetary obligation due from one party to the other in connection with this agreement or in relation to any other dispute relating to livestock sold or purchased at the auction, the buyer and the seller agree that the dispute or difference shall be settled by an expert to be appointed between the parties or, in default of agreement, by the Association, such person to act as expert and not as arbitrator and his decision to be binding on all the parties.

NOTE TO PURCHASERS

The Welsh Mule Sheep Breeders' Association extends a warm welcome to buyers at its Thirty Seventh official sale at Welshpool.

The Entry of Sheep catalogued have been bred on the traditionally hard and healthy hill farms of Wales.

The Society members are obliged to use Rams officially approved by the Blue-Faced Leicester Society as sires for the Welsh Mules on offer, and the sheep have to be bred from either the hardy Welsh Mountain, Speckled Face, or Beulah ewes, all hill breeds renowned for their hardiness and exceptional mothering qualities.

Despite the fact that the Welsh Mule Society was only officially formulated in 1976 - the breed is already firmly established throughout England and Wales (and in Scotland) as one of the most popular breeds for crossing with recognised fat lamb sires for the production of Prime quality lean fleshed lambs as now demanded by both the British housewife and continental markets.

The sheep are acclaimed as excellent mothers giving minimal lambing problems, good milkers, yield wool of a high grade and are of a temperament to adapt to either intensive outdoor or indoor wintering systems. Other commercial characteristics of the breed being their ability to produce early maturing Prime lambs, and longevity resulting in low depreciation rates for buyers.

Breeding Stock and their lambs have been exhibited at the major National Shows and National Sheep Association events in 2019 and a wide spectrum of Prime Lamb producers were most favourably impressed with the quality of the sheep and of their potential in fulfilling the present day requirements of the meat trade.

Buyers can be assured that there will be adequate transport available for the prompt despatch of sheep purchased to any part of the U.K.

It is the intention of the Association to ensure complete satisfaction, all sheep on offer will be approved by an officially appointed panel of inspectors prior to being offered. for sale. The Society's field officer, Mr J Hamer, will be present at the sale and services will be available to all intending and actual purchasers both during and after the sale day.

Performance Welsh Mules

The Welsh Mule Sheep Breeders Association has provided the sheep industry with high performing, profitable breeding ewes that have benefitted from the maximum amount of hybrid vigour for many years. The benefits of hybrid vigour are at their highest when two breeds are used and that vigour decreases as more breeds are added to the mix. The crossing of the Blue-Faced Leicester with Welsh Mountain and hill breeds has been a proven method of maximising the benefits of hybrid vigour.

A group of Welsh Mule breeders have asked to take the process a little further by supplying Welsh Mule ewe lambs for sale at the association's sales that have been produced by using a 'Performance' recorded Blue-Faced Leicester ram; those ewe lambs are being called simply 'Performance' Welsh Mules.

In order to qualify to market their sheep as 'Performance' Welsh Mules, breeders will have to meet a few simple qualifying criteria.

'Performance' Welsh Mule breeders will need to work with the Blue-Faced Leicester Association and the Welsh Mule Sheep Breeders Association to formally identify 'Performance' Welsh Mules sired that perform above-average on the index of recorded Blue-Faced Leicester Rams.

All 'Performance' Welsh Mules in any one pen must be sired by a Blue-Faced Leicester Ram with an index in the top 50% in the year of purchases, according to Signet 'Performance' recorded data. This data is also available on the BASCO website.

Each 'Performance' Welsh Mule breeder can contact the Blue-Faced Leicester Sheep Association for a certificate which highlights the identify of the qualifying ram or rams used. These certificates can be displayed on the pens at the Welsh Mule sales.

All 'Performance' Welsh Mules will be identified in the sale catalogue with the letters PM shown in bold, immediately after the lot number e.g. if lot 371 is a pen of 'Performance' Welsh Mules then it will appear as 371**PM** in the catalogue.

In 2013, Blue Faced Leicester Rams with an index above 97 were marked as Qualifying Rams for the purpose of producing 'performance' Welsh Mules and this status remains with the ram for it's lifetime. In 2014 the index stood at 111 or above.

The Welsh Mule Sheep Breeders Association and Blue-Faced Leicester Association will continue to work together as this initiative develops.

IF YOU WANT A GOOD DEAL -
INVEST IN THE BEST AND BUY WELSH MULES

General Secretaries:

W.A.O.S. Ltd., Gorseland, P.O. Box 8, North Road, Aberystwyth SY23 2WB

Tel: (01970) 636688

Field Officer: Mr J Hamer. Tel: 07527 174420

Hotels, Guest House and Bed and Breakfast in Welshpool	Telephone
Mr & Mrs Slack, Moors Farm, Welshpool Powys SY21 9JR	01938 553395
Mr & Mrs Jones, Moat Farm, Welshpool Powys SY21 8SE	01938 553179
Mr & Mrs Emberton, Tynllwyn, Welshpool Powys SY21 9B	01938 553175
Royal Oak Hotel, Welshpool, Powys SY21 7DG	01938 552271
The Talbot Hotel, Berriew, Welshpool, Powys SY21 8PJ	01686 640881

ROAD HAULAGE

A. E. JONES

Tel: (01570) 872946

M. E. EDWARDS & SONS

Tel: (01938) 810362

T. HODNETT

Tel: 07967 630366

K. EVANS

Tel: 07768 995491

BOWEN & SON

Tel: 07908 780259

L & P. A. MORRIS & SONS

Tel: 07970 116996

Lairage can be made available for Wednesday 9th October 2019, but **MUST BE** pre-booked with the auctioneers.

1. **All Yearling Ewes for the 2019 sales must have full E.I.D Tags (Pink)**
2. **All Ewe Lambs for the 2019 Sales must have full E.I.D Tags (Brown)**
3. Yearling Ewes should have a **Yellow E.I.D Tag** in one ear and a **MATCHING Pink Tag** in the other ear **OR** a MATCHING pair of Red replacement tags, one in each ear.
4. Ewe Lambs should have a **Yellow E.I.D Tag** in the left ear and a **MATCHING Brown Tag** in the other ear.
5. Ewe Lambs should have a **Yellow E.I.D Tag** in the left ear and a **MATCHING Purple Tag** in the other ear for the 2020 sales.

THURSDAY 10TH OCTOBER 2019

CATALOGUE

Sale commences at 10.30 a.m. prompt

ORDER OF CATALOGUE - The sheep will be sold in Catalogue order which has been DRAWN BY BALLOT under the supervision of the Welsh Mule Sheep Breeders Association Ltd.

YEARLINGS

R M & G Hughes, Ty Canol, Trefonen

1 20 Yearlings
2 10 Yearlings

UK721188

Heptavac P+
Gold Fleece

R L & D M Davies, Glanfeiglo, Llanfyllin

3 15 Yearlings

UK700272

Heptavac P x2
Dectomax

B K, J E & A M Rees, Penbryncennau, Abbeycwmhir

4 25 Yearlings

UK727741

Heptavac P
Gold Fleece

M G & M M Williams, Llwyn Onn, Brooks

5 25 Yearlings

UK701358

Heptavac P+
Dectomax
Crovect

J E Evans & Son, Middle Nantserth, Rhayader

6 10 Yearlings
7 20 Yearlings
8 20 Yearlings
9 10 Yearlings
10 20 Yearlings
11 20 Yearlings

UK721596

F/A
Heptavac P+ x2
Gold Fleece

R W Morgan, Caetwpa, Llanbrynmair

12 10 Yearlings
13 10 Yearlings

UK707876

F/A
Heptavac P
Scabivax

I T Jerman, Oakfields, Cyfronydd

14 19 Yearlings
15 20 Yearlings
16 25 Yearlings

UK701699

F/A
Heptavac P+
Gold Fleece

C F Brooks, Tai Gwynion, Clatter, Caersws

17 16 Yearlings

UK713321

F/A
Heptavac P+ x2
Scabivax
Dectomax**I J & M E O Jones, Plasmadoc, Dolfor**

18 10 Yearlings

19 10 Yearlings

20 10 Yearlings

21 10 Yearlings

UK701459

F/A
Heptavac P+ x2
Dipped**W C & J M Gittins, Ashton Farm, Castle Caereinion**

22 20 Yearlings

23 20 Yearlings

24 20 Yearlings

25 20 Yearlings

26 20 Yearlings

27 20 Yearlings

28 20 Yearlings

29 20 Yearlings

30 20 Yearlings

31 20 Yearlings

32 20 Yearlings

33 20 Yearlings

34 20 Yearlings

35 20 Yearlings

36 20 Yearlings

UK701688

F/A
Heptavac P
Cydectin LA
Crovect**J G & S O Lewis, Tyisaf, Llanfair Caereinion**

37 18 Yearlings

UK700999

F/A
Gold Fleece
All Reared**EWE LAMBS****G Davies, Penrhallt, Nant Y Rhiw**

41 20 Ewe Lambs

42 20 Ewe Lambs

43 20 Ewe Lambs

UK704970

F/A
Heptavac P x2
Cydectin
Ectofly**J T & J A Davies & Son, Upper Cilgee, Doldowlod**

44 25 Ewe Lambs

45 25 Ewe Lambs

46 25 Ewe Lambs

47 25 Ewe Lambs

48 25 Ewe Lambs

49 25 Ewe Lambs

50 25 Ewe Lambs

51 25 Ewe Lambs

UK721517

F/A
Heptavac P+ x2
Gold Fleece
Fluke & Wormed
Multi Vitamin

J W Rees & Son, Nantyrhendy, Llangurig

52 20 Ewe Lambs
53 20 Ewe Lambs
54 20 Ewe Lambs

UK701209
F/A
Heptavac P x2
Cydectin LA
Scabivax

H M & G E Davies, Aberdauddwr, Llandewi Brefi

55 20 Ewe Lambs
56 20 Ewe Lambs

UK747401
F/A
Heptavac P+ x2
Scabivax
Gold Fleece

Edwards Bros, Glashirfryn, Llanrhaeadr YM

57 30 Ewe Lambs
58 30 Ewe Lambs
59 30 Ewe Lambs

UK706162
F/A
Heptavac P+
Scabivax
Gold Fleece

A G Roberts, Abernodwydd, Llangadfan

60 25 Ewe Lambs
61 25 Ewe Lambs
62 25 Ewe Lambs
63 25 Ewe Lambs

UK701112
F/A
Bravoxin 10
Scabivax
Dectomax

E N & E J Bound, Cefnbeidiog, Llanidloes

64 20 Ewe Lambs
65 20 Ewe Lambs
66 20 Ewe Lambs
67 20 Ewe Lambs
68 20 Ewe Lambs

UK709590
F/A
Heptavac P+ x2
Scabivax
Cydectin LA
Crovect

J Thomas & Son, Tanhouse, Dolau

69 20 Ewe Lambs
70 20 Ewe Lambs
71 20 Ewe Lambs
72 20 Ewe Lambs
73 20 Ewe Lambs
74 20 Ewe Lambs
75 20 Ewe Lambs
76 20 Ewe Lambs
77 20 Ewe Lambs
78 20 Ewe Lambs

UK720974
F/A
Heptavac P x2
Gold Fleece
Scabivax
Footvax

J E Evans & Son, Middle Nantserth, Rhayader

79 20 Ewe Lambs
80 20 Ewe Lambs
81 20 Ewe Lambs
82 20 Ewe Lambs
83 20 Ewe Lambs
84 20 Ewe Lambs

UK721596
F/A
Heptavac P+
Gold Fleece

J C Hamer, Cwm, Dolwen

85 10 Ewe Lambs
86 10 Ewe Lambs
87 10 Ewe Lambs
88 20 Ewe Lambs
89 20 Ewe Lambs
90 20 Ewe Lambs
91 20 Ewe Lambs
92 20 Ewe Lambs

UK700456

F/A
Heptavac P+ x2
Scabivax
Dectomax
Scabivax
Crovect

H A & S M Jones, Llwyn Gwgan, Llangwm

93 20 Ewe Lambs
94 20 Ewe Lambs

UK704598

F/A
Heptavac P x2
Cydectin

A G & J K Davies, Upper Esgair, Abbeycwmhir

95 25 Ewe Lambs
96 25 Ewe Lambs

UK720860

F/A
Heptavac P+ x2
Scabivax
Gold Fleece

C Thomas, Beili Ddol Farm, Rhayader

97 25 Ewe Lambs
98 25 Ewe Lambs
99 25 Ewe Lambs
100 25 Ewe Lambs
101 25 Ewe Lambs
102 25 Ewe Lambs
103 25 Ewe Lambs
104 25 Ewe Lambs
105 25 Ewe Lambs

UK724246

F/A
Heptavac P+
Gold Fleece

A M Jones, Middle Farm, Rorrington

106 25 Ewe Lambs
107 25 Ewe Lambs
108 25 Ewe Lambs
109 25 Ewe Lambs
110 25 Ewe Lambs
111 25 Ewe Lambs

UK305050

F/A
Heptavac P+
Dipped

R A C Williams & Son, Glyndwr, Llanfair Caereinion

112 20 Ewe Lambs
113 20 Ewe Lambs
114 10 Ewe Lambs

UK700995

F/A
Heptavac P+ x2
Gold Fleece
Scabivax

T Davies & Partners, Red House, Tregynon

115 20 Ewe Lambs
116 20 Ewe Lambs

UK701569

F/A

Yeomans & Partners, Llwyn Y Brain, Adfa			UK700764
117	15	Ewe Lambs	F/A
118	15	Ewe Lambs	Heptavac P Scabivax Premadec
R W Morgan, Caetwpa, Llanbrynmair			UK707876
119	15	Ewe Lambs	F/A
120	15	Ewe Lambs	Heptavac P Scabivax
A R P & D R Wilson, Cnwch, Llanbister			UK729611
121	20	Ewe Lambs	F/A
122	20	Ewe Lambs	Heptavac P x2 Scabivax Cydectin LA
T E Thomas & Co, Melingrug, Llanfair Caereinion			UK701049
123	20	Ewe Lambs	F/A
124	20	Ewe Lambs	Heptavac P+ x2
125	20	Ewe Lambs	Gold Fleece
126	20	Ewe Lambs	Scabivax
Neuaddgoch Farm Ltd, Neuaddgoch, Adfa			UK700767
127	25	Ewe Lambs	F/A
128	25	Ewe Lambs	Heptavac P x2
129	25	Ewe Lambs	Scabivax Gold Fleece
E P Hughes & Co, Porth, Llananno			UK720878
130	25	Ewe Lambs	F/A
131	25	Ewe Lambs	Heptavac P
132	25	Ewe Lambs	Scabivax
133	25	Ewe Lambs	Cydectin
134	25	Ewe Lambs	
135	25	Ewe Lambs	
136	25	Ewe Lambs	
G Gayther & Son, Little Moelfre, Llanbister			UK721149
137	20	Ewe Lambs	F/A
138	20	Ewe Lambs	Heptavac P x2
139	15	Ewe Lambs	Scabivax Gold Fleece
J T & G M Edwards & Son, Maesllyn, Llangollen			UK705754
139A	20	Ewe Lambs	
139B	20	Ewe Lambs	
139C	20	Ewe Lambs	

J E & S J Roberts, Pantybriallu, Castle Caereinion

140 20 Ewe Lambs
141 20 Ewe Lambs
142 20 Ewe Lambs
143 20 Ewe Lambs
144 20 Ewe Lambs
145 20 Ewe Lambs

UK701682

F/A
Heptavac P+ x2
Scabivax
Gold Fleece

H Hughes & Son, Hendy, Abbeycwmhir

146 20 Ewe Lambs
147 20 Ewe Lambs

UK720865

F/A
Heptavac P+ x2
Scabivax
Gold Fleece

A Roberts & Sons, Dolau, Llanerfyl

148 25 Ewe Lambs
149 25 Ewe Lambs

UK700974

F/A
Heptavac P+ x2
Scabivax
Gold Fleece

A E Thomas & Son, Glanrafon, Llananno

150 20 Ewe Lambs
151 20 Ewe Lambs
152 25 Ewe Lambs
153 25 Ewe Lambs
154 10 Ewe Lambs
155 20 Ewe Lambs
156 10 Ewe Lambs

UK720874

F/A
Heptavac P+ x2
Scabivax
Crovect
Zermex

E W Williams, Penllwyn, Rhiwhiriaeth

157 20 Ewe Lambs
158 20 Ewe Lambs
159 20 Ewe Lambs
160 20 Ewe Lambs
161 20 Ewe Lambs

UK701047

F/A
Heptavac P+ x2
Scabivax
Cydectin LA

E Jones & Son, Melindwr, Llwydiarth

162 25 Ewe Lambs
163 20 Ewe Lambs

UK700242

Heptavac P+
Paramectin
Crovect

J M Price, Maeshyfyd, Llanfihangel

164 20 Ewe Lambs
165 15 Ewe Lambs
166 10 Ewe Lambs

UK700260

F/A
Heptavac P+ x2
Scabivax
Gold Fleece

J M & S M Rowlands, Dolwen, Llanidloes

167	20	Ewe Lambs
168	20	Ewe Lambs
169	20	Ewe Lambs
170	20	Ewe Lambs
171	20	Ewe Lambs
172	20	Ewe Lambs

UK700481

F/A
Scabivax
Bravoxin 10
Dipped

A J & J M Abberley, Cerrigcroes, Llanyre

173	25	Ewe Lambs
174	25	Ewe Lambs
175	25	Ewe Lambs
176	25	Ewe Lambs
177	25	Ewe Lambs
178	25	Ewe Lambs
179	25	Ewe Lambs
180	25	Ewe Lambs
181	25	Ewe Lambs
182	25	Ewe Lambs
183	25	Ewe Lambs
184	25	Ewe Lambs
185	25	Ewe Lambs
186	25	Ewe Lambs
187	25	Ewe Lambs
188	25	Ewe Lambs
189	25	Ewe Lambs
190	25	Ewe Lambs
191	25	Ewe Lambs
192	25	Ewe Lambs
193	25	Ewe Lambs
194	25	Ewe Lambs
195	25	Ewe Lambs
196	25	Ewe Lambs
197	25	Ewe Lambs
198	25	Ewe Lambs
199	25	Ewe Lambs
200	25	Ewe Lambs
210	25	Ewe Lambs
202	25	Ewe Lambs
202A	25	Ewe Lambs
203	25	Ewe Lambs
204	25	Ewe Lambs
205	25	Ewe Lambs
206	25	Ewe Lambs
207	25	Ewe Lambs

UK721523

F/A
Gold Fleece
Heptavac P x2
Orf

C Thomas, Upper Llaithddu, Llaithddu

208 25 Ewe Lambs
209 25 Ewe Lambs
210 25 Ewe Lambs
211 25 Ewe Lambs
212 25 Ewe Lambs
213 25 Ewe Lambs
214 25 Ewe Lambs
215 25 Ewe Lambs
216 25 Ewe Lambs

UK724246
F/A
Heptavac P+
Gold Fleece

T E & D Jones, Penlan Gwnnws, Ystrad Meurig

217 20 Ewe Lambs
218 20 Ewe Lambs

UK743770
F/A
Heptavac P x2
Orf
Gold Fleece

G Price, Hafod, Llaithddu

219PM 25 Ewe Lambs
220PM 25 Ewe Lambs
221PM 25 Ewe Lambs
222PM 25 Ewe Lambs
223PM 25 Ewe Lambs
224PM 25 Ewe Lambs
225PM 25 Ewe Lambs
226PM 25 Ewe Lambs
227PM 20 Ewe Lambs
228PM 20 Ewe Lambs
229PM 20 Ewe Lambs
230PM 20 Ewe Lambs
231 20 Ewe Lambs
232 20 Ewe Lambs
233 20 Ewe Lambs
234 20 Ewe Lambs

UK720921
F/A
Heptavac P x2
Scabivax
Gold Fleece

J M Gayther, Little Grogau, Llanbister

235 25 Ewe Lambs
236 25 Ewe Lambs
237 25 Ewe Lambs
238 25 Ewe Lambs
239 25 Ewe Lambs
240 25 Ewe Lambs
241 25 Ewe Lambs
242 25 Ewe Lambs

UK721148
Scabivax

H I Wilson & Co, Bwlch Henllan, Lower Chapel

243 20 Ewe Lambs

UK720455

F/A
Dectomax
Heptavac P
Scabivax
Footvax**D H Tilsley, Fox Hill, Shelve**

244 20 Ewe Lambs

245 20 Ewe Lambs

246 20 Ewe Lambs

247 20 Ewe Lambs

248 20 Ewe Lambs

UK700758

F/A
Heptavac P
Orf
Dipped**G K E & L A Rees & Son, Tynlone, Rhayader**

249 25 Ewe Lambs

250 25 Ewe Lambs

251 25 Ewe Lambs

252 25 Ewe Lambs

253 25 Ewe Lambs

254 25 Ewe Lambs

255 25 Ewe Lambs

256 25 Ewe Lambs

257 25 Ewe Lambs

258 25 Ewe Lambs

259 25 Ewe Lambs

260 25 Ewe Lambs

261 25 Ewe Lambs

UK721587

F/A
Organic
Heptavac P
Cydectin
Scabivax**J C Davies & Son, Gelli Gethin, Llanfair Caereinion**

262 20 Ewe Lambs

263 20 Ewe Lambs

264 20 Ewe Lambs

265 20 Ewe Lambs

266 20 Ewe Lambs

267 20 Ewe Lambs

268 20 Ewe Lambs

269 20 Ewe Lambs

270 20 Ewe Lambs

271 20 Ewe Lambs

272 10 Ewe Lambs

UK701011

F/A
Heptavac P+ x2
Scabivax
Gold Fleece**D G Pugh & Co, Birches, Llanidloes**

273 20 Ewe Lambs

274 20 Ewe Lambs

275 20 Ewe Lambs

276 20 Ewe Lambs

277 20 Ewe Lambs

UK700479

F/A
Heptavac P+ x2
Cydectin LA
Crovect

H & S Watkins, Cammen Uchaf, Llanfihangel

278 25 Ewe Lambs
279 25 Ewe Lambs
280 25 Ewe Lambs
281 25 Ewe Lambs
282 25 Ewe Lambs

UK700262
Heptavac P+ x2
Scabivax
Clik
Dectomax

I C Goodwin, Lower Esgair, Llanbadarn Fynydd

283 10 Ewe Lambs
284 10 Ewe Lambs
285 10 Ewe Lambs
286 10 Ewe Lambs
287 10 Ewe Lambs
288 10 Ewe Lambs

UK720915
F/A
Heptavac P x2
Scabivax
Gold Fleece

A Rowlands & Son, Noyadd Fach, Nantmel

289 20 Ewe Lambs
290 20 Ewe Lambs
291 20 Ewe Lambs
292 20 Ewe Lambs
293 20 Ewe Lambs

UK721568
F/A
Heptavac P+ x2
Scabivax
Gold Fleece
Zolvix

B J & M Y Davies, Gorse Farm, St Harmon

294 25 Ewe Lambs
295 25 Ewe Lambs
296 25 Ewe Lambs
297 25 Ewe Lambs
298 25 Ewe Lambs
299 25 Ewe Lambs

UK721620
F/A
Heptavac P
Orf

J Hughes & L Davies, Rogerstone, Glasbury

300 25 Ewe Lambs
301 25 Ewe Lambs
302 25 Ewe Lambs
303 25 Ewe Lambs
304 25 Ewe Lambs
305 25 Ewe Lambs

UK729014
Heptavac P x2
Gold Fleece
Scabivax

Jones Bros, Ystradolwyn, Llangurig

306 20 Ewe Lambs
307 20 Ewe Lambs

UK701191
F/A
Heptavac P x2
Dipped

Price & Morgan, Tyrosser, Llanafan Fawr

308 20 Ewe Lambs
309 20 Ewe Lambs

UK720033
F/A
Heptavac P
Gold Fleece

R V Wilson, Bwlchdyddwyallt, Merthyr Cynog

310 25 Ewe Lambs

UK720551

F/A
Gold Fleece
Bravoxin 10
Scabivax

D A Davies & Son, Deildre Fawr, Llanidloes

311 20 Ewe Lambs

312 20 Ewe Lambs

UK701264

F/A
Heptavac P+ x2
Scabivax
Cydectin
Crovect

D R Davies, Llanerch Hafod, Crossgates

313 10 Ewe Lambs

314 10 Ewe Lambs

315 10 Ewe Lambs

UK720889

Heptavac P x2
Shower Dipped

W J Williams, Ty Dewi, Gronant

316 25 Ewe Lambs

317 25 Ewe Lambs

318 25 Ewe Lambs

319 25 Ewe Lambs

UK707265

F/A
Heptavac P+ x2
Gold Fleece

A Owen, Gwinllan, Rhayader

320 10 Ewe Lambs

321 10 Ewe Lambs

UK730397

Association Tag Colours for Ewe Lambs

Sequence 2020 to 2026

2020 - Purple

2021 - Green

2022 - Blue

2023 - Orange

2024 - White

2025 - Pink

2026 - Brown



Agricultural Services

Rural Professionals Offering
Expert Advice Since 1862.

- Purchase and Sale of Agricultural Property
- Valuations
- Agricultural Mortgage Corporation (AMC) Agents
- Live and Deadstock Sales
- Basic Payment Scheme and Grants
- Compulsory Purchase and Compensation
- Agricultural Planning
- Land Management
- Renewables and Diversification



Keith Davies
Welshpool Office



Tony Evans
Newtown Office



Richard Evans
Welshpool Office



Tom Davies
Welshpool Office



Jonathan Evans
Welshpool Office



Glandon Lewis
Welshpool Office



Joe Powell
Newtown Office



**For further information please contact the Agricultural Team
at our dedicated Rural Office 01938 552 371**

Aberystwyth 01970 625020
Bishops Castle 01588 638511
Llanidloes 01686 412567

London 0203 368 3986
Lettings Centre 01686 626160
Machynlleth 01654 702472

Newtown 01686 626160
Oswestry 01691 679595
Rhayader 01597 739994

Tywyn 01654 710388
Welshpool 01938 554818
Aberdyfi (window display)



Established 1862 . morrismarshall.co.uk





Christmas Cracker Market



Crafts- Produce- Santa's Grotto- Trees- Gifts

Prize Draw in Aid of Lingen Davies.

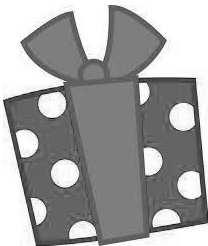
***Children's Tractor Rides & Florist
Demonstration.***

Trade Stands are still welcome.

***Please contact Katie Robson at the Market
Office for further information on***

Tel:01938 553438

Email: katie@welshpoolsmithfield.co.uk



Welshpool

Annual Sale of Welsh Mule Sheep

Thursday 10th October 2019

Purchaser's Name _____
(in full)

Address _____
(in full)

Tel. No.: _____

Number of first lot bought _____

Each purchaser will oblige by filling in this slip and handing to the Auctioneer's Clerk on making his first purchase.



WHY SEND YOUR WOOL TO BRITISH WOOL



As a producer owned organisation our mission is to maximise the returns our producers receive for their wool.

	British Wool	Competitors
All profits are returned to the producer		
Return the true market value of the wool		
Take all types of wool		
True national coverage – making it convenient and cost effective for producers to send their wool		
Supporting the next generation through shearing training and new entrants scheme		
Creating downstream global consumer demand for British wool to help increase prices		

To find out more call us on **01274 688666**
or visit our website at **britishwool.org.uk**

Together we're growing something special.